



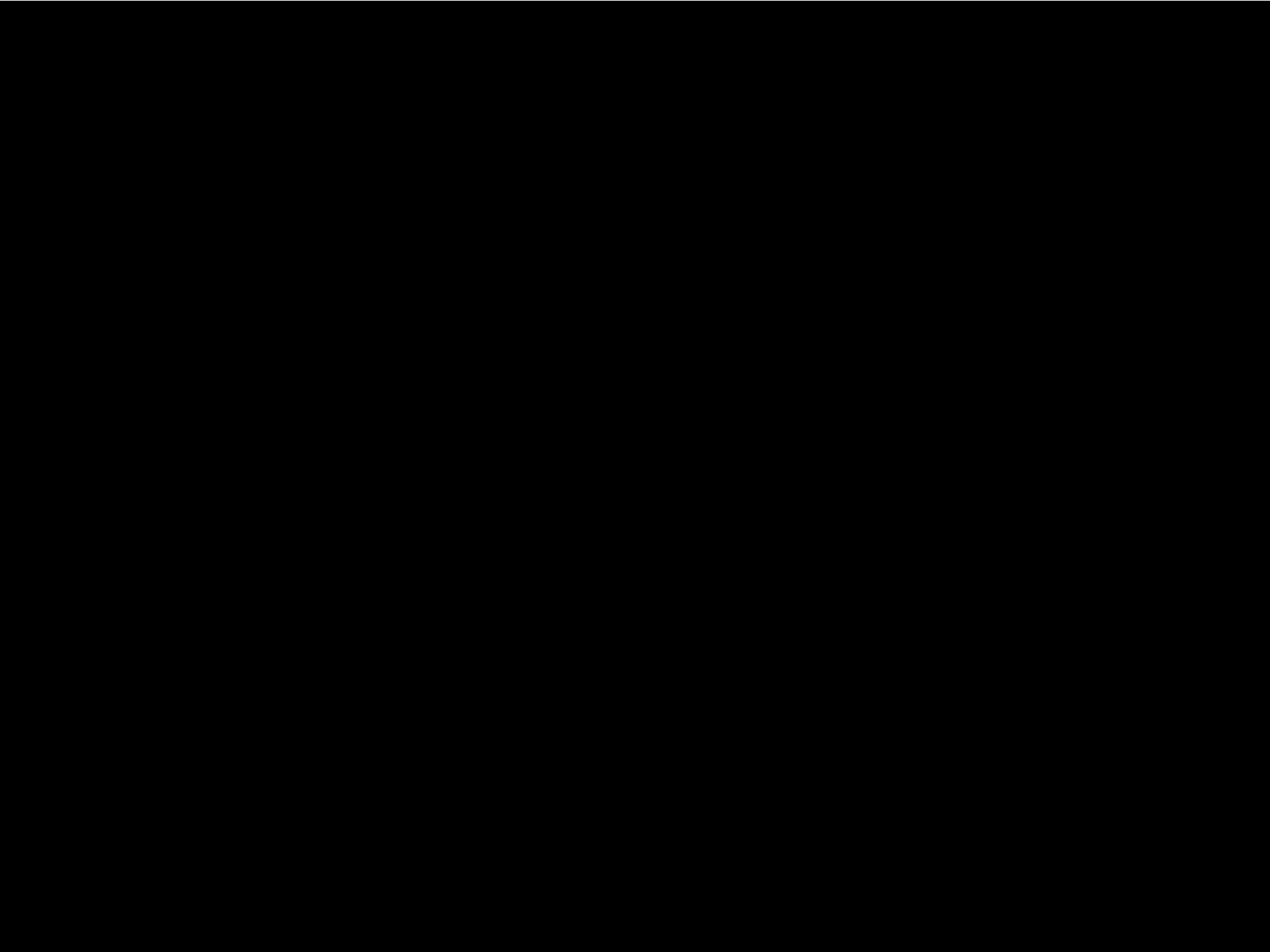
NATIONAL ASSOCIATION OF FLIGHT INSTRUCTORS

MENTOR

LIVE

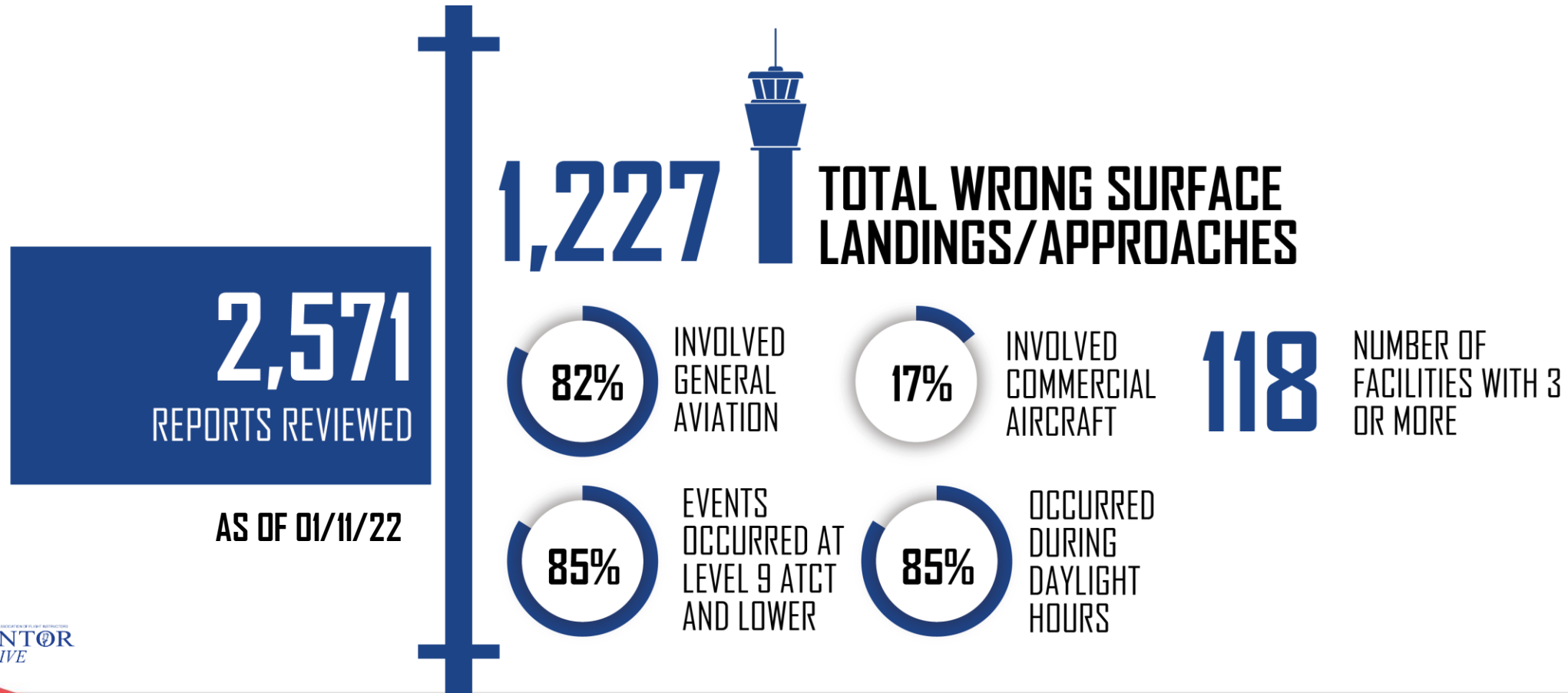
Circles, Ovals and Cylinders, Oh My!
How They Can Help You
Small Shapes – Big Changes

NATIONAL ASSOCIATION OF FLIGHT INSTRUCTORS



Wrong Surface Arrivals

WHAT IS THE DATA TELLING US?



Wrong Surface Departures WHAT IS THE DATA TELLING US?

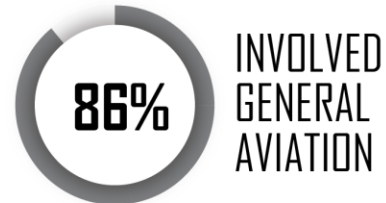
2,571
REPORTS REVIEWED

AS OF 01/11/22

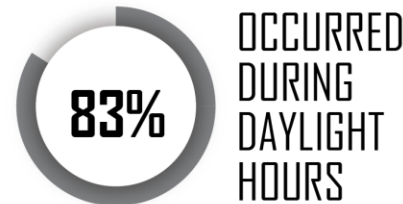
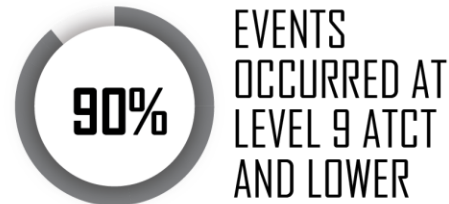
251



TOTAL WRONG SURFACE DEPARTURES



23 NUMBER OF FACILITIES WITH 3 OR MORE



WHAT ARE WRONG SURFACE HOT SPOTS?



Definition: Location on an airport movement area with a history or potential risk of collision or runway incursion, and where heightened attention by pilots and drivers is necessary

Common Causes: Airport layout, traffic flow, airport marking, signage and lighting, situational awareness, training



DEPICTING HOT SPOTS ON AIRPORT DIAGRAM

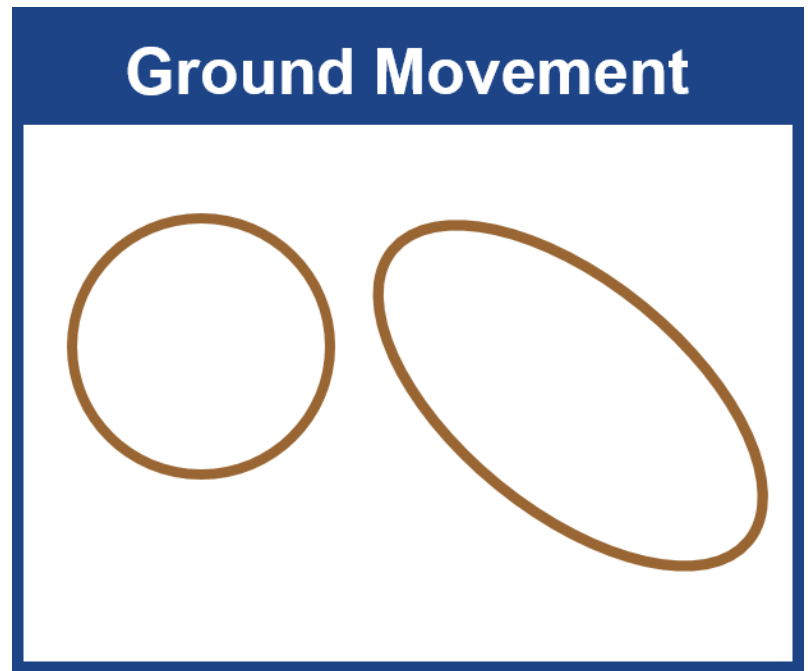
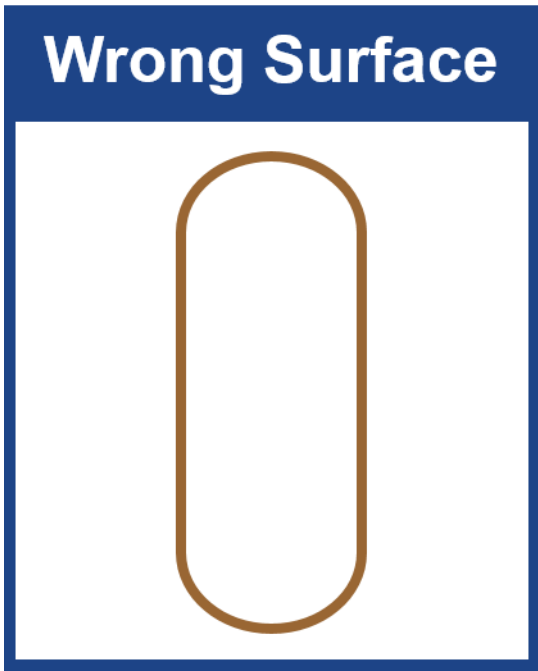
Current State: Variety of shapes

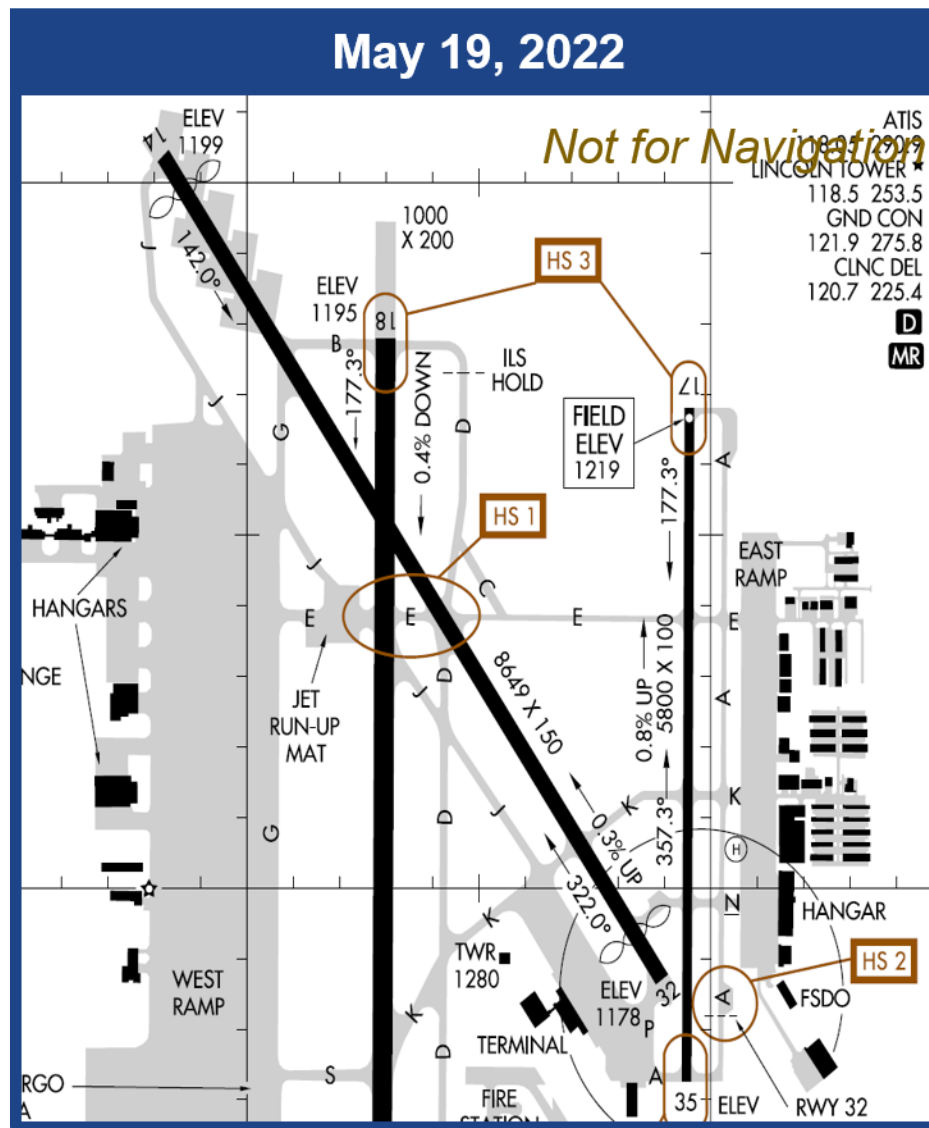
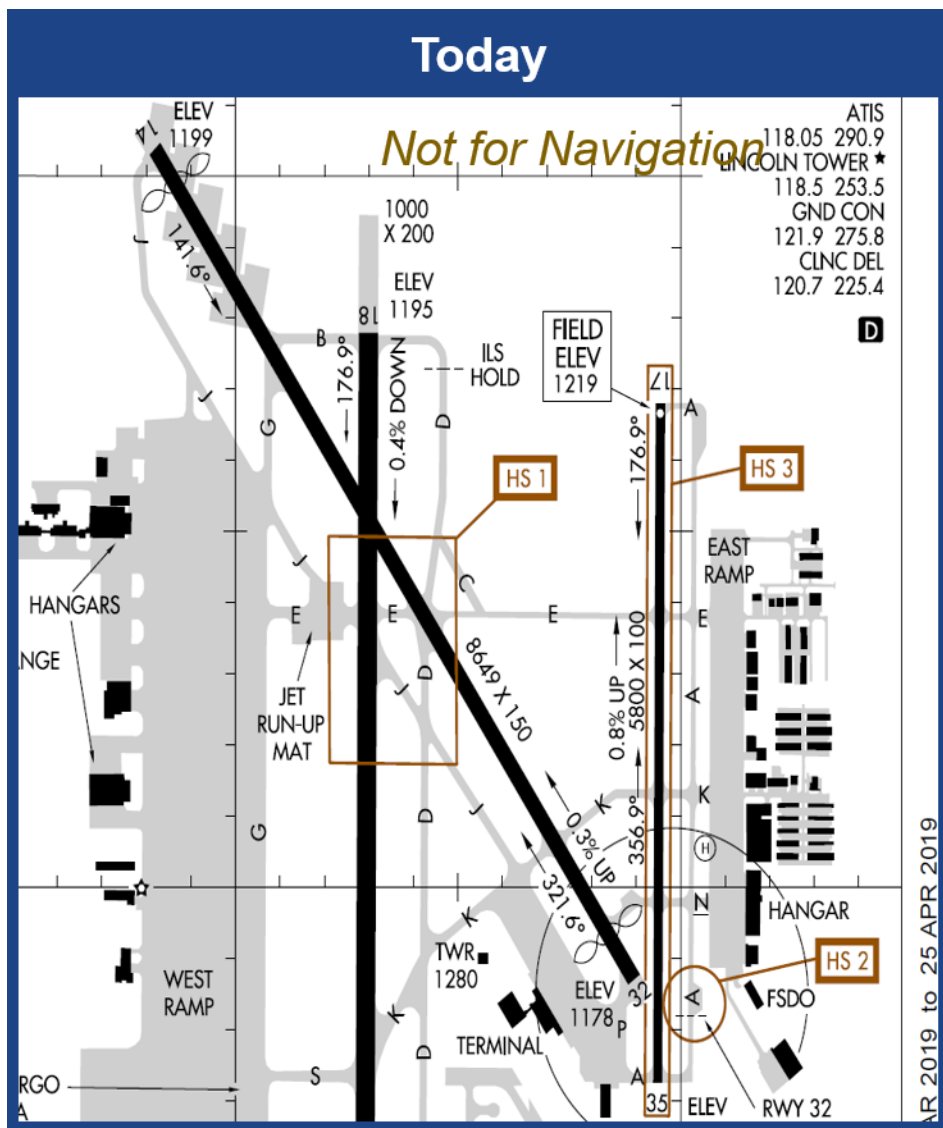
Future State: Circular shapes (Effective May 2022)



AIRPORT DIAGRAM

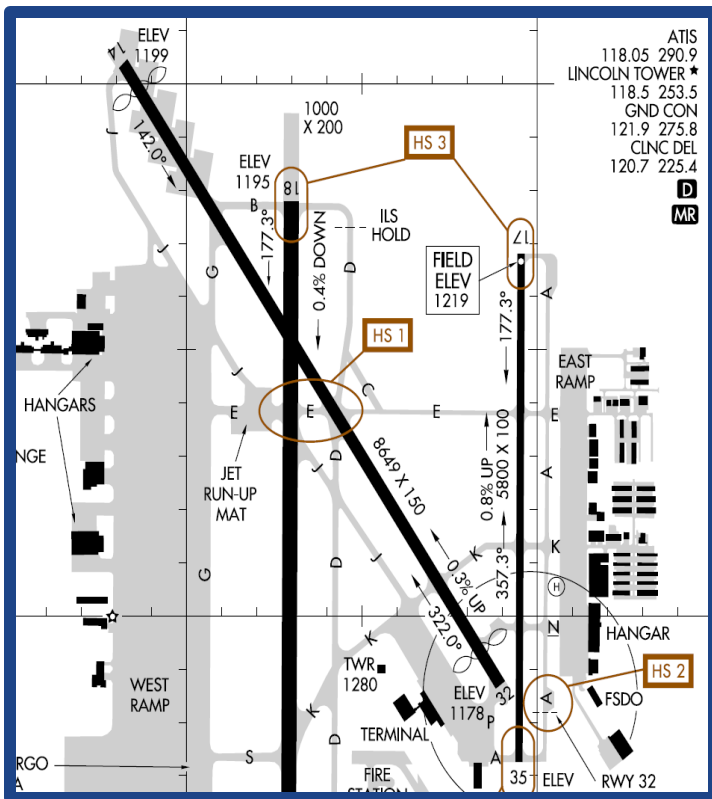
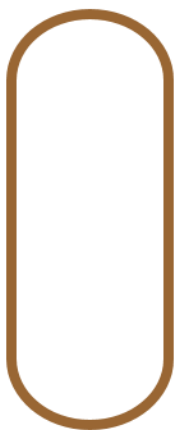
HOT SPOT STANDARDIZED SYMBOL





CYLINDERS & ARRIVAL ALERT NOTICES

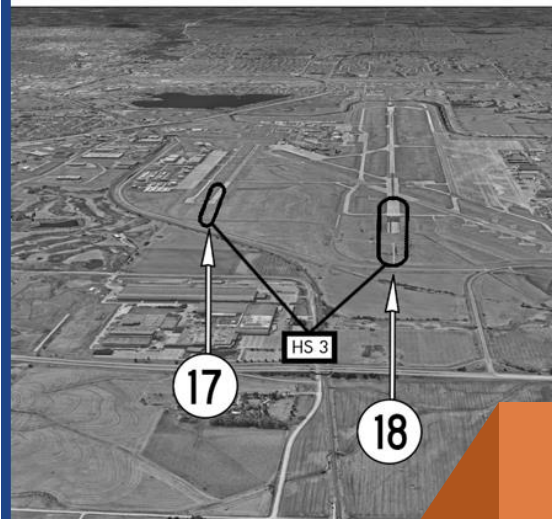
New Wrong Surface Symbology



Arrival Alert Notice

LINCOLN (LNK) ARRIVAL ALERT

Landing South
Rwy 17 and Rwy 18



Off-set Parallels.
Pilots be aware that Rwy 17
farther down the approach

Not for Navigational Purp
For Situational Awareness
For Inquiries: 9-awa-Runw
Effective 19 MAY 2022 to 16 MAY 2024

Arrival Alert Notices (AAN) are created for Wrong Surface Arrivals to give pilots a clearer picture of the Hot Spot issue

Not for Navigational Purposes
For Situational Awareness Only
For Inquiries: 9-awa-RunwaySafety@faa.gov
Effective 19 May 2022 to 16 May 2024

WHERE CAN YOU FIND ARRIVAL ALERT NOTICES?

FAA Chart Supplement Publication

NEBRASKA

75

LINCOLN (LNK)(KLNK) P (ANG ARNG) 4 NW UTC-6(-5DT) N40°51.05' W96°45.55' **OMAHA**
 1219 B TPA—See Remarks ARFF Index—See Remarks NOTAM FILE LNK **H-5C, L-101**
RWY 18-36: H12901X200 (ASPH-CONC-GRVD) S-100, D-200, **IAP, AD**
 2S-175, 2D-400 PCN 58 R/B/W/U HIRL

RWY 18: MALSR. PAPI(P4L)—GA 3.0° TCH 55'. RVR-TR Rgt tfc. 0.4% down.

RWY 36: MALSR. PAPI(P4L)—GA 3.0° TCH 56'. RVR-TR

RWY 14-32: H8649X150 (ASPH-GRVD) S-80, D-170, 2S-175, 2D-280 PCN 43 F/B/X/U MIRL

RWY 14: REIL. PAPI(P4L)—GA 3.0° TCH 48'. Thld dsplcd 363'.

RWY 32: VASI(V4L)—GA 3.0° TCH 50'. Thld dsplcd 470'. Pole. 0.3% up.

RWY 17-35: H5800X100 (ASPH-CONC-GRVD) S-45, D-59 PCN 15 R/C/W/T MIRL 0.8% up N

RWY 17: REIL. PAPI(P4L)—GA 3.0° TCH 44'.

RWY 35: ODALS. PAPI(P4L)—GA 3.0° TCH 30'. Rgt tfc.

RUNWAY DECLARED DISTANCE INFORMATION

RWY 14: TORA-8649 TODA-8649 ASDA-8649 LDA-8286

RWY 17: TORA-5800 TODA-5800 ASDA-5400 LDA-5400

RWY 18: TORA-12901 TODA-12901 ASDA-12901 LDA-12901

RWY 32: TORA-8649 TODA-8649 ASDA-8286 LDA-7816

RWY 35: TORA-5800 TODA-5800 ASDA-5800 LDA-5800

RWY 36: TORA-12901 TODA-12901 ASDA-12901 LDA-12901

SERVICE: S4 FUEL 100LL, JET A OX 1

35 opr cont on med ints, REIL Rwy

and Rwy 17-35 opr cont on low i

18, Rwy 35 and Rwy 36 on co

MILITARY—JASU (M32A-60) (FUEL A++(Mil), 100LL, A FLUID SP OIL O-128-133-148(Mil)

AIRPORT REMARKS: Attended continuously. Birds invof arpt. Ensure correct rwy lineup. Rwy 17-35 is the shorter rwy on the east side of the arpt. Rwy 32 calm wind rwy. Rwy 32 apch holdline on South Twy A. TPA-heavy military jet 3000 (1781).

PPR 24 hrs for acft parking on the west ramp, ctc arpt 402-458-2480. Class I, ARFF Index B. ARFF Index C level

equipment provided. **NOTE:** See Special Notices - Arrival Alert.

MILITARY REMARKS: CSTMS/IMG Provisional port of entry: US Customs avbl only with 24 hr notice and only for DOD aircrew and



Note: See Special Notices – Arrival Alert.

WHICH AIRPORTS HAVE ARRIVAL ALERT NOTICES?



* Indicates Core 30



WEST HANGARS

A

HS 3

3746

ELEV 990 3L

025.8°

3R ELEV 996

025.8°

ELEV 991

ATTENTION: RE ALERT TO DI...

WHEN WILL YOU SEE THESE CHANGES?

Effective 5/19/22:

- Hot Spot Standardized Symbology
- Arrival Alert Notices
- Update to the Pilot/Controller Glossary



ARRIVAL ALERT NOTICE